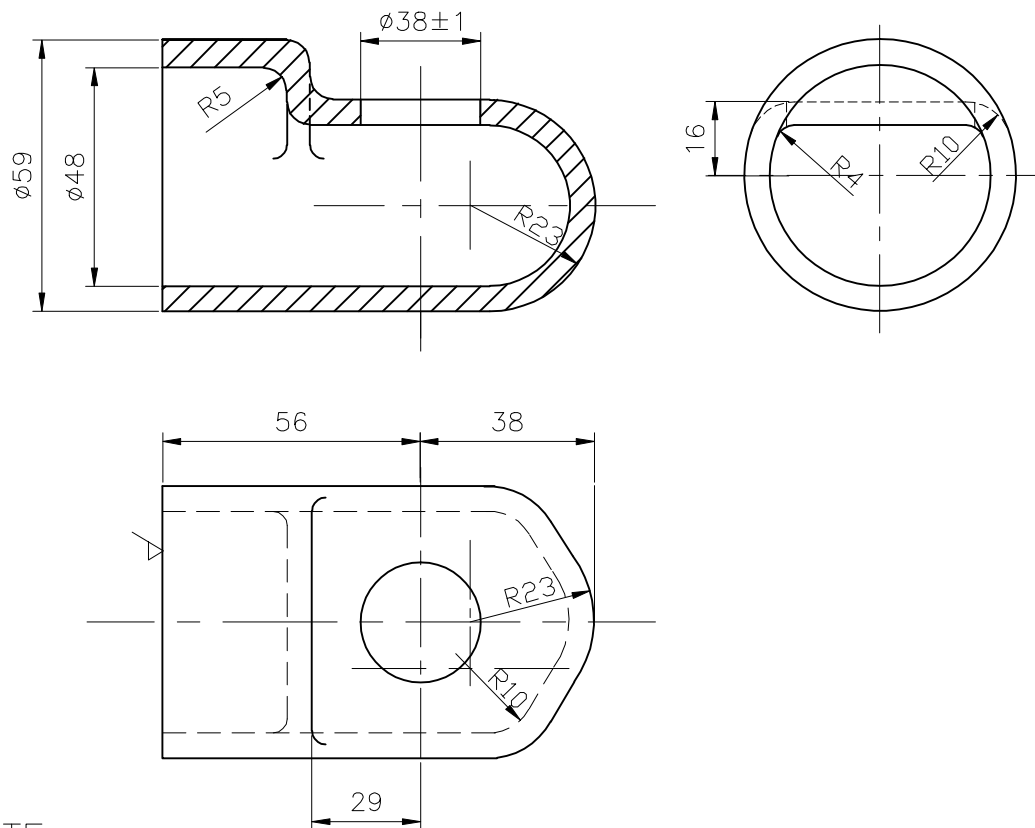


ALL DIMENSIONS ARE IN MILLIMETRES.

FOR TOLERANCES OF UNTOLERANCED DIMENSIONS DURING MANUFACTURE REFER RELEVANT QCP/QP


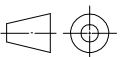
REV	DATE	ALTERED	J.S
03	24.02.11	CHD & APPD	K.S
RADIUS R10 INTERSECTION POINT MARKED IN THE DRAWING.			
DCN.NO: 801133/5012916			



NOTE:—

- ✓ INDICATES THE SURFACES TO BE MACHINED.
- DIMENSIONAL DEVIATIONS FOR CASTING SHALL BE AS APPLICABLE TO STEEL CASTINGS.
- FOR MACHINING DRAWING REFER 4-20-201-00162.
- FOR QUALITY REQUIREMENTS REFER LATEST APPLICABLE QUALITY PROCEDURES.

PART CODE: 920059630000

	CASTING	920059630000	A297 Gr HH			0.8				
NO OFF	DESCRIPTION	MATL CODE	MATL SPECN	HEAT TREATMENT	SCRAP SORT	NET WT (kg)	GROSS WT (kg)	DRAWING No	ITEM No	
<div> 365-127</div> <div>BHARAT HEAVY ELECTRICALS LTD., UNIT: HIGH PRESSURE BOILER PLANT. TIRUCHIRAPALLI 620014.</div>					DRN	NAME S.NAPPI	SIGN S.N	DATE 9.11.04	NO.OF VAR	
					CHD	K.SRIDHARAN	K.S	9.11.04		
					APPD	S.NATARAJAN	S.N	9.11.04		
DEPT SB			SCALE NTS	WEIGHT (KG). 0.8	REFERENCE INFORMATION				NO. OF ITEMS	
CODE 330										
TITLE NOZZLE HEAD CASTING					CARD CODE U 01	DRAWING NO. 4-20-201-00681				REV 03